


THE BASICS

- Sleeping pad - foam or inflatable
- Sleeping bag - recommended down, at least 20°F to 32°F degree rated
- Pillow - backpacking pillows are recommended 
- Sturdy water bottle - Nalgene bottles are great!
- Backpack to fit your clothing - hiking pack not necessary but handy!
- Headlamp or flashlight - with fresh batteries
- Two towels
- Water resistant watch
- Toiletries

SAFETY GEAR

- Sunglasses with strap - the strap is essential if you don't want to lose them!
- Sunscreen & lipbalm with SPF
- Bug repellent
- Rain poncho
- Water shoes or sandals with straps - Chacos or Tevas are great!
- Hat for sun protection - wide brims are ideal
- Hiking boots - wear them around for at least two weeks ahead of time to wear them in!
- Medications - in original containers

PACKING LIST

canoe trip camp edition

CLOTHING ESSENTIALS

Pack enough for a week of camp!

- Base layer - shirt or long sleeve. Light, moisture-wicking, breathable, sun protecting. **Do not pack cotton!**
- Mid layer - A mid-layer, usually light jacket (breathable, but warmer. Synthetic or fleece.) **Do not pack cotton!**
- Pants/Shorts - Lightweight hiking pants or shorts or both
- Bathing suit - two would be ideal
- Extra socks - wool socks are best!

OPTIONAL

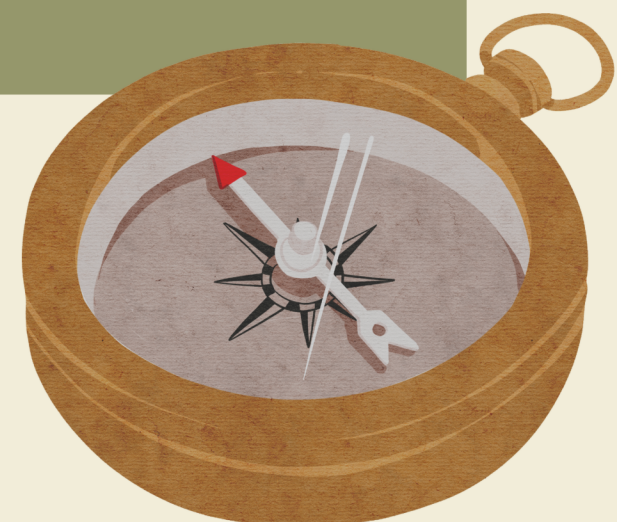
- Non-digital camera
- Journal
- Pocket knife
- Hammock
- Small games - ie: uno

LEAVE AT HOME, PLEASE.

- Cash
- Gum, Candy, Snacks
- Electronic devices including smart watches, tablets and (especially) cell phones.

PLEASE LABEL EACH ITEM WITH THE CAMPER'S NAME

Camp Chickagami is not responsible for lost, stolen or otherwise damaged items that are brought to camp. Lost and found items are collected and displayed each day during camp.





PACKING LIST

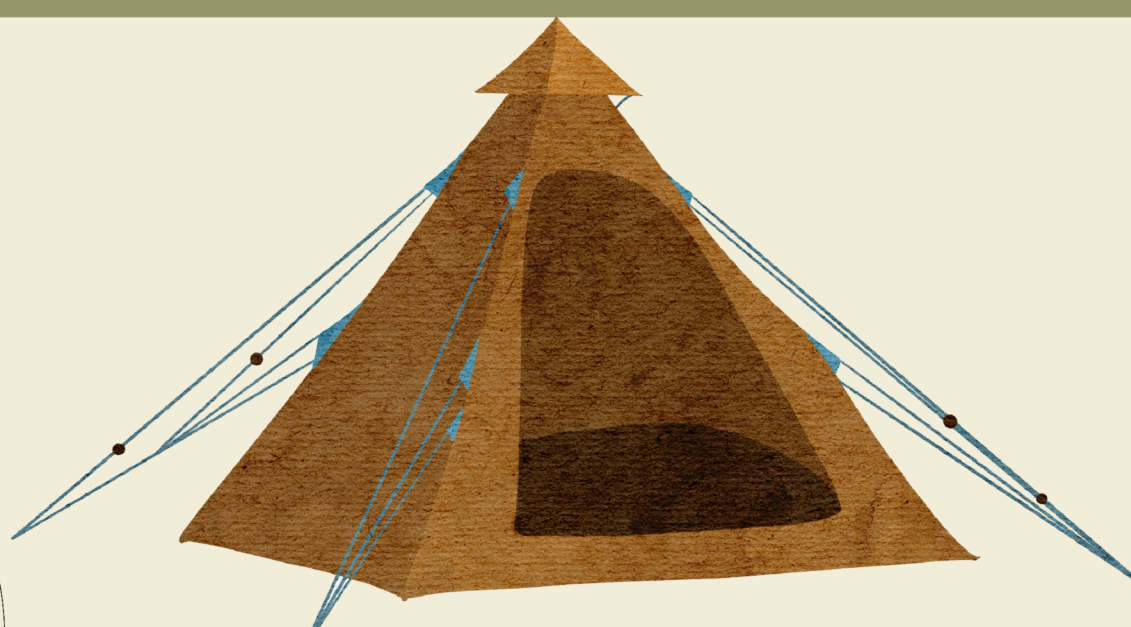
overnight camp
prohibited items & policies edition

LEAVE THESE AT HOME, PLEASE.

- ✘ Digital camera
- ✘ Radio/speakers
- ✘ Matches & lighters
- ✘ Tablet
- ✘ Cellphone
- ✘ Snacks, food & gum
- ✘ iPod/Music Players

CAMP POLICIES

- Camp Chickagami is a drug-free facility.
- The possession and use of alcohol is not permitted while at Camp Chickagami.
- Camp Chickagami prohibits the possession and control of weapons, firearms, and dangerous devices while on Camp Property or as a part of a Camp Program.
- To protect the safety and welfare of guests and camp personnel, camp authorities may search a guest, guest use areas, or guest automobiles, and may seize any illegal, unauthorized, or contraband materials discovered in the search. The Camp Director or another staff person designated by the Camp Director may request authorization for a search or conduct an emergency search when a threat to staff or guest is deemed imminent. If a properly conducted search yields illegal or contraband materials, such findings shall be turned over to proper legal authorities for ultimate disposition.
- Camp Chickagami is not responsible for lost or stolen items.
- Equipment for all programs offered on site by Camp Chickagami will be provided by Camp Chickagami. If off-site, vendors may be utilized for specialized equipment.
- Pets are allowed on the property on a case-by-case for staff and volunteers at the discretion of the Camp Director.
- Smoking and vaping are prohibited at Camp Chickagami.
- Use of vehicles at the Facility is restricted to roads and parking areas designated by camp staff.



QUESTIONS? EMAIL DIRECTORS@CAMPCHICKAGAMI.ORG

Camp Chickagami is not responsible for lost, stolen or otherwise damaged items that are brought to camp. Lost and found items are collected and displayed each day during camp.

